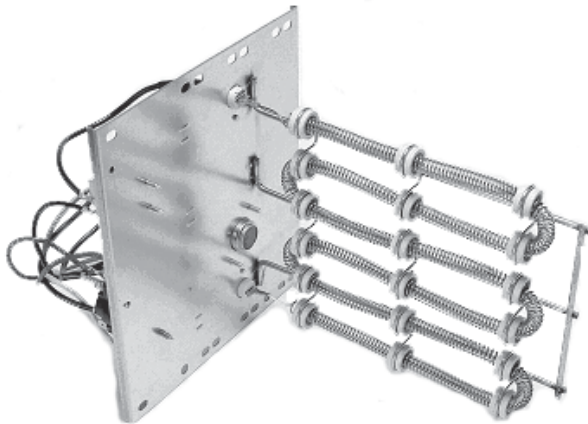




Air Conditioning & Heating

PRODUCT SPECIFICATIONS



**FOR AIR HANDLERS
AND PACKAGED ELECTRIC UNITS**

HKR SERIES ELECTRIC HEAT KITS

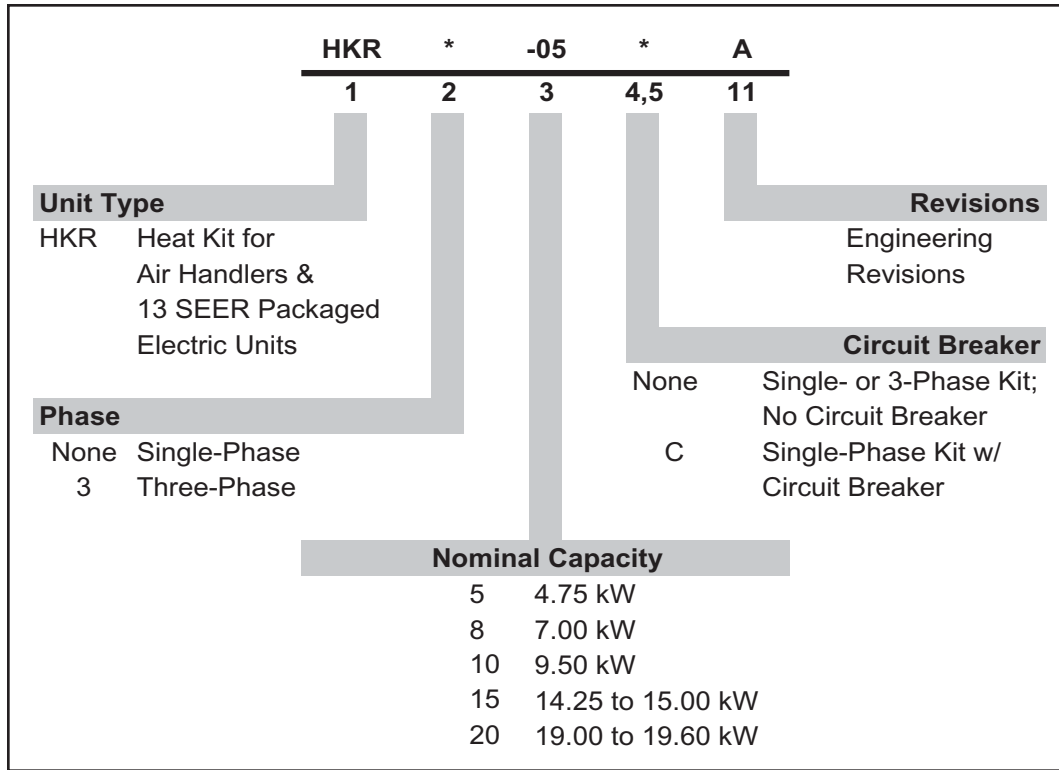
The Goodman® brand HKR Electric Heat Kits are for use with Goodman® brand air handlers and modular blowers as well as packaged electric/heat pump units. These versatile heat kits are designed for easy installation in the field and cover a wide range of applications.

Standard Features

- Sequencers for better temperature control
- Multiple branch circuit capability
- Completely assembled and tested
- Built-in overcurrent protection on all units (as indicated in the Electrical Data)
- Control circuitry arranged to readily permit staging
- Factory-installed circuit breakers available on specific models (See Electrical Data)
- Fuse link secondary high-temperature limit control
- Plug-in wiring harness for ease on installation into air handler
- Rust-resistant nickel chromium heat elements
- ETL Listed



NOMENCLATURE



HEATING kW CORRECTION FACTOR

Supply Voltage	240	230	220	210	208
Correction Factor	1.00	0.93	0.85	0.78	0.76

Multiply the 240 volt ampacity by factors

AIR HANDLER ELECTRICAL DATA

Model & Heat Kit Usage	Circuit 1			Circuit 2		
	Heater Amps	MCA ¹	MOP ²	Heater Amps	MCA ¹	MOP ²
AEPF183016A*	0 / 0	2.5 / 2.5	15 / 15	---	--	--
HKR-05*, HKR-05C*	17.1 / 19.8	24 / 27	30 / 30	---	--	--
HKR-08*, HKR-08C*	25.3 / 29.2	34 / 39	40 / 40	---	--	--
HKR-10*, HKR-10C*	34.3 / 39.6	45 / 52	60 / 60	---	--	--
AEPF303616A*	0 / 0	3.1 / 3.1	15 / 15	---	--	--
HKR-08*, HKR-08C*	25.3 / 29.2	35 / 40	40 / 40	---	--	--
HKR-10*, HKR-10C*	34.3 / 39.6	46 / 53	60 / 60	---	--	--
HKR-15C*	34.3 / 39.6	46 / 53	60 / 60	17.2 / 19.8	22/25	30 / 30
AEPF426016A*	0 / 0	7.8 / 7.8	15 / 15	---	--	--
HKR-10*, HKR-10C*	34.3 / 39.6	51 / 57	60 / 60	---	--	--
HKR-15C*	34.3 / 39.6	51 / 57	60 / 60	17.2 / 19.8	21/25	30 / 30
HKR-20C*	34.3 / 39.6	51 / 57	60 / 60	34.3 / 39.6	43/50	60 / 60
HKR-21C*	37.9 / 43.8	54 / 60	60 / 60	37.9 / 43.8	48/55	60 / 60
AEPF183016B*	0 / 0	2.5 / 2.5	15 / 15	---	---	---
HKR-03*	10.8 / 12.5	16 / 18.1	20 / 20	---	---	---
HKR-05* / 05C*	17.1 / 19.8	24 / 27	30 / 30	---	---	---
HKR-06*	21.6 / 25.0	30 / 34	40 / 40	---	---	---
HKR-08* / -08C*	25.3 / 29.2	34 / 39	40 / 40	---	---	---
HKR-10* / -10C*	34.3 / 39.6	45 / 52	60 / 60	---	---	---
AEPF303616B*	0 / 0	3.1 / 3.1	15 / 15	---	---	---
HKR-03*	10.8 / 12.5	17 / 19	20 / 20	---	---	---
HKR-05* / 05C*	17.1 / 19.8	24 / 28	30 / 30	---	---	---
HKR-06*	21.6 / 25.0	30 / 34	40 / 40	---	---	---
HKR-08* / -08C*	25.3 / 29.2	35 / 40	40 / 40	---	---	---
HKR-10* / -10C*	34.3 / 39.6	46 / 53	60 / 60	---	---	---
HKR-15C*	34.3 / 39.6	46 / 53	60 / 60	17.2 / 19.8	22 / 25	30 / 30
AEPF426016B*	0 / 0	7.8 / 7.8	15 / 15	---	---	---
HKR-03*	10.8 / 12.5	21 / 24	30 / 30	---	---	---
HKR-05* / 05C*	17.1 / 19.8	29 / 33	40 / 40	---	---	---
HKR-06*	21.6 / 25.0	34.8 / 39	40 / 40	---	---	---
HKR-08* / -08C*	25.3 / 29.2	39 / 44	60 / 60	---	---	---
HKR-10* / -10C*	34.3 / 39.6	51 / 57	60 / 60	---	---	---
HKR-15C*	34.3 / 39.6	51 / 57	60 / 60	17.2 / 19.8	22 / 25	30 / 30
HKR-20C*	34.3 / 39.6	51 / 57	60 / 60	34.3 / 39.6	43 / 50	60 / 60
HKR-21C*	37.9 / 43.8	54 / 60	60 / 60	37.9 / 43.8	48 / 55	60 / 60
ASPF183016**	0 / 0	3.1 / 3.1	15 / 15	---	---	---
HKR-03*	10.8 / 12.5	19 / 21	20 / 20	---	---	---
HKR-05* / -05C*	17.1 / 19.8	27 / 30	30 / 30	---	---	---
HKR-06*	21.6 / 25.0	32 / 37	40 / 40	---	---	---
HKR-08* / -08C*	25.3 / 29.2	37 / 39	40 / 40	---	---	---
HKR-10* / -10C*	34.3 / 39.6	48 / 55	60 / 60	---	---	---
HKR-15C*	34.3 / 39.6	46 / 53	60 / 60	17.2 / 19.8	21 / 25	30 / 30
^HKR3-15*	0 / 0	3.1 / 3.1	15 / 15	31.2 / 36.1	39 / 45	60 / 60
ASPF303616**	0 / 0	3.8 / 3.8	15 / 15	---	---	---
HKR-03*	10.8 / 12.5	15 / 17	20 / 20	---	---	---
HKR-05* / -05C*	17.1 / 19.8	24 / 27	30 / 30	---	---	---
HKR-06*	21.6 / 25.0	32 / 37	40 / 40	---	---	---
HKR-08* / -08C*	25.3 / 29.2	35 / 40	40 / 40	---	---	---
HKR-10* / -10C*	34.3 / 39.6	48 / 55	60 / 60	---	---	---
HKR-15C*	34.3 / 39.6	46 / 53	60 / 60	17.2 / 19.8	21 / 25	30 / 30
HKR-20C*	34.3 / 39.6	51 / 57	60 / 60	34.3 / 39.6	43 / 50	60 / 60
HKR-21C*	37.9 / 43.8	54 / 60	60 / 60	37.9 / 43.8	48 / 55	60 / 60
^HKR3-15*	0 / 0	3.8 / 3.8	15 / 15	31.2 / 36.1	39 / 45	60 / 60
^HKR3-20*	0 / 0	3.8 / 3.8	15 / 15	40.6 / 46.9	51 / 59	60 / 60

See Notes on Page 5.

AIR HANDLER ELECTRICAL DATA (CONT.)

Model & Heat Kit Usage	Circuit 1			Circuit 2		
	Heater Amps	MCA ¹	MOP ²	Heater Amps	MCA ¹	MOP ²
ASPF426016**	0 / 0	5.3 / 5.3	15 / 15	---	---	---
HKR-03*	10.8 / 12.5	15 / 17	20 / 20	---	---	---
HKR-05* / -05C*	17.1 / 19.8	24 / 27	30 / 30	---	---	---
HKR-06*	21.6 / 25.0	32 / 37	40 / 40	---	---	---
HKR-08* / -08C*	25.3 / 29.2	35 / 40	40 / 40	---	---	---
HKR-10* / -10C*	34.3 / 39.6	46 / 53	60 / 60	---	---	---
HKR-15C*	34.3 / 39.6	51 / 57	60 / 60	17.2 / 19.8	21 / 25	30 / 30
HKR-20C*	34.3 / 39.6	51 / 57	60 / 60	34.3 / 39.6	43 / 50	60 / 60
HKR-21C*	37.9 / 43.8	54 / 60	60 / 60	37.9 / 43.8	48 / 55	60 / 60
^HKR3-15*	0 / 0	5.3 / 5.3	15 / 15	31.2 / 36.1	39 / 45	60 / 60
^HKR3-20*	0 / 0	5.3 / 5.3	15 / 15	40.6 / 46.9	51 / 59	60 / 60
ARUF172916 **	0 / 0	2.1 / 2.1	15 / 15	---	---	---
HKR-03*	10.8 / 12.5	16 / 18	20 / 20	---	---	---
HKR-05* / 05C*	17.1 / 19.8	24 / 27	30 / 30	---	---	---
HKR-06*	21.6 / 25.0	30 / 34	40 / 40	---	---	---
HKR-08* / -08C*	25.2 / 29.1	34 / 39	40 / 40	---	---	---
HKR-10* / -10C*	34.3 / 39.6	45 / 52	60 / 60	---	---	---
HKR-15C*	34.3 / 39.6	45 / 52	60 / 60	17.2 / 19.8	22 / 25	30 / 30
ARUF182416 ** / ARPF182416 ** / ADPF182416 **	0 / 0	2.1 / 2.1	15 / 15	---	---	---
HKR-03*	10.8 / 12.5	16 / 18	20 / 20	---	---	---
HKR-05* / 05C*	17.1 / 19.8	24 / 27	30 / 30	---	---	---
HKR-06*	21.6 / 25.0	30 / 34	40 / 40	---	---	---
HKR-08* / -08C*	25.2 / 29.1	34 / 39	40 / 40	---	---	---
HKR-10* / -10C*	34.3 / 39.6	45 / 52	60 / 60	---	---	---
HKR-15C*	34.3 / 39.6	45 / 52	60 / 60	17.2 / 19.8	22 / 25	30 / 30
ARUF193116 ** / ARPF193116 **	0 / 0	1.9 / 1.9	15 / 15	---	---	---
HKR-03*	10.8 / 12.5	15 / 17	20 / 20	---	---	---
HKR-05* / 05C*	17.1 / 19.8	23 / 27	30 / 30	---	---	---
HKR-06*	21.6 / 25.0	29 / 33	40 / 40	---	---	---
HKR-08* / -08C*	25.2 / 29.1	33 / 38	40 / 40	---	---	---
HKR-10* / -10C*	34.3 / 39.6	45 / 51	60 / 60	---	---	---
HKR-15C*	34.3 / 39.6	45 / 51	60 / 60	17.2 / 19.8	22 / 25	30 / 30
ARUF303016 ** / ARPF303016 **	0 / 0	3.3 / 3.3	15 / 15	---	---	---
HKR-03*	10.8 / 12.5	17 / 19	20 / 20	---	---	---
HKR-05* / 05C*	17.1 / 19.8	25 / 28	30 / 30	---	---	---
HKR-06*	21.6 / 25.0	30 / 35	40 / 40	---	---	---
HKR-08* / -08C*	25.2 / 29.1	35 / 40	40 / 40	---	---	---
HKR-10* / -10C*	34.3 / 39.6	46 / 53	60 / 60	---	---	---
HKR-15C*	34.3 / 39.6	46 / 53	60 / 60	17.2 / 19.8	22 / 25	30 / 30
HKR-20C*	34.3 / 39.6	46 / 53	60 / 60	34.3 / 39.6	43 / 49	60 / 60
HKR-21C*	37.9 / 43.8	51 / 58	60 / 60	37.9 / 43.8	48 / 55	60 / 60
^HKR3-15*	0 / 0	3.3 / 3.3	15 / 15	31.2 / 36.1	39 / 45	60 / 60
^HKR3-20*	0 / 0	3.3 / 3.3	15 / 15	40.6 / 46.9	51 / 59	60 / 60
ARUF364216 ** / ARPF364216 ** / ADPF304216 **	0 / 0	3.7 / 3.7	15 / 15	---	---	---
HKR-03*	10.8 / 12.5	17 / 19	20 / 20	---	---	---
HKR-05* / 05C*	17.1 / 19.8	25 / 28	30 / 30	---	---	---
HKR-06*	21.6 / 25.0	31 / 35	40 / 40	---	---	---
HKR-08* / -08C*	25.2 / 29.1	35 / 40	40 / 40	---	---	---
HKR-10* / -10C*	34.3 / 39.6	47 / 53	60 / 60	---	---	---
HKR-15C*	34.3 / 39.6	47 / 53	60 / 60	17.2 / 19.8	22 / 25	30 / 30
HKR-20C*	34.3 / 39.6	47 / 53	60 / 60	34.3 / 39.6	43 / 49	60 / 60
HKR-21C*	37.9 / 43.8	51 / 58	60 / 60	37.9 / 43.8	48 / 55	60 / 60
^HKR3-15*	0 / 0	3.7 / 3.7	15 / 15	31.2 / 36.1	39 / 45	60 / 60
^HKR3-20*	0 / 0	3.7 / 3.7	15 / 15	40.6 / 46.9	51 / 59	60 / 60

See Notes on Page 5.

AIR HANDLER ELECTRICAL DATA (CONT.)

Model & Heat Kit Usage	Circuit 1			Circuit 2		
	Heater Amps	MCA ¹	MOP ²	Heater Amps	MCA ¹	MOP ²
ARUF374316 ** / ARPF374316 **	0 / 0	4.2 / 4.2	15 / 15	---	---	---
HKR-03*	10.8 / 12.5	18 / 20	20 / 20	---	---	---
HKR-05* / 05C*	17.1 / 19.8	26 / 29	30 / 30	---	---	---
HKR-06*	21.6 / 25.0	31 / 35	40 / 40	---	---	---
HKR-08* / -08C*	25.2 / 29.1	36 / 41	40 / 40	---	---	---
HKR-10* / -10C*	34.3 / 39.6	47 / 54	60 / 60	---	---	---
HKR-15C*	34.3 / 39.6	47 / 54	60 / 60	17.2 / 19.8	22 / 25	30 / 30
HKR-20C*	34.3 / 39.6	47 / 54	60 / 60	34.3 / 39.6	43 / 49	60 / 60
HKR-21C*	37.9 / 43.8	52 / 59	60 / 60	37.9 / 43.8	48 / 55	60 / 60
^HKR3-15*	0 / 0	4.2 / 4.2	15 / 15	31.2 / 36.1	39 / 45	60 / 60
^HKR3-20*	0 / 0	4.2 / 4.2	15 / 15	40.6 / 46.9	51 / 59	60 / 60
ARUF486016 ** / ARPF486016 ** / ADPF486016 **	0 / 0	5.4 / 5.4	15 / 15	---	---	---
HKR-03*	10.8 / 12.5	19 / 21	20 / 20	---	---	---
HKR-05* / 05C*	17.1 / 19.8	27 / 30	30 / 30	---	---	---
HKR-06*	21.6 / 25.0	32 / 37	40 / 40	---	---	---
HKR-08* / -08C*	25.2 / 29.1	37 / 39	40 / 40	---	---	---
HKR-10* / -10C*	34.3 / 39.6	48 / 55	60 / 60	---	---	---
HKR-15C*	34.3 / 39.6	48 / 55	60 / 60	17.2 / 19.8	22 / 25	30 / 30
HKR-20C*	34.3 / 39.6	48 / 55	60 / 60	34.3 / 39.6	43 / 49	60 / 60
HKR-21C*	37.9 / 43.8	53 / 59	60 / 60	37.9 / 43.8	48 / 55	60 / 60
^HKR3-15*	0 / 0	5.4 / 5.4	15 / 15	31.2 / 36.1	39 / 45	60 / 60
^HKR3-20*	0 / 0	5.4 / 5.4	15 / 15	40.6 / 46.9	51 / 59	60 / 60
A24-00-2R *	0 / 0	1.0 / 1.0	15 / 15	---	---	---
HKR-03*	11.4 / 12.5	15 / 17	20 / 20	---	---	---
HKR-05* / 05C*	18.1 / 19.8	24 / 26	30 / 30	---	---	---
HKR-06*	22.9 / 25.0	30 / 32	40 / 40	---	---	---
HKR-08* / -08C*	26.7 / 29.1	34 / 37	40 / 40	---	---	---
HKR-10* / -10C*	36.3 / 39.6	46 / 51	60 / 60	---	---	---
A36-00-2R * / A48-00-2R *	0 / 0	1.8 / 1.8	15 / 15	---	---	---
HKR-03*	11.4 / 12.5	16 / 17	20 / 20	---	---	---
HKR-05* / 05C*	18.1 / 19.8	24 / 27	30 / 30	---	---	---
HKR-06*	22.9 / 25.0	30 / 33	40 / 40	---	---	---
HKR-08* / -08C*	26.7 / 29.1	35 / 38	40 / 40	---	---	---
HKR-10* / -10C*	36.3 / 39.6	47 / 51	60 / 60	---	---	---
HKR-15C*	36.3 / 39.6	47 / 51	60 / 60	18.1 / 19.8	23 / 25	30 / 30
HKR-20C*	36.3 / 39.6	47 / 51	60 / 60	36.3 / 39.6	45 / 50	60 / 60
A60-00-2R *	0 / 0	4.3 / 4.3	15 / 15	---	---	---
HKR-03*	11.4 / 12.5	18 / 19	20 / 20	---	---	---
HKR-05* / 05C*	18.1 / 19.8	26 / 28	30 / 30	---	---	---
HKR-06*	22.9 / 25.0	32 / 35	40 / 40	---	---	---
HKR-08* / -08C*	26.7 / 29.1	37 / 40	40 / 40	---	---	---
HKR-10* / -10C*	36.3 / 39.6	49 / 53	60 / 60	---	---	---
HKR-15C*	36.3 / 39.6	49 / 53	60 / 60	18.1 / 19.8	23 / 25	30 / 30
HKR-20C*	36.3 / 39.6	49 / 53	60 / 60	36.3 / 39.6	45 / 50	60 / 60

¹ Minimum Circuit Ampacity (Heater Amps + Motor Amps) X 1.25

² Maximum Overcurrent Protection = 2.25 X Motor Amps + Heater Amps

^ Circuit 1: Single-phase for Air Handlers Circuit 2: Three-phase for HKR3 Heater Kits

* Revision level that may or may not be designated

C = Circuit Breaker Option

--- indicates Not Required

AIR HANDLER ELECTRICAL DATA (CONT.)

Model & Heat Kit Usage	Circuit 1			Circuit 2		
	Heater Amps	MCA ¹	MOP ²	Heater Amps	MCA ¹	MOP ²
MBR0800AA-1 **	0 / 0	1.9 / 1.9	15 / 15	---	---	---
HKR-03*	10.8 / 12.5	15 / 17	20 / 20	---	---	---
HKR-05* / 05C*	17.1 / 19.8	23 / 26	30 / 30	---	---	---
HKR-06*	21.6 / 25.0	29 / 33	40 / 40	---	---	---
HKR-08* / -08C*	25.3 / 29.2	33 / 38	40 / 40	---	---	---
HKR-10* / -10C*	34.3 / 39.6	44 / 51	60 / 60	---	---	---
MBR1200AA-1 **	0 / 0	3.0 / 3.0	15 / 15	---	---	---
HKR-03*	10.8 / 12.5	16 / 18	20 / 20	---	---	---
HKR-05* / 05C*	17.1 / 19.8	24 / 27	40 / 40	---	---	---
HKR-06*	21.6 / 25.0	29 / 34	40 / 40	---	---	---
HKR-08* / -08C*	25.3 / 29.2	34 / 39	40 / 40	---	---	---
HKR-10* / -10C*	34.3 / 39.6	45 / 52	60 / 60	---	---	---
HKR-15C*	34.3 / 39.6	45 / 52	60 / 60	17.2 / 19.8	22 / 25	30 / 30
HKR-20C*	34.3 / 39.6	45 / 52	60 / 60	34.3 / 39.6	43 / 50	60 / 60
HKR-21C*	37.9 / 43.8	50 / 57	60 / 60	37.9 / 43.8	47 / 55	60 / 60
^HKR3-15*	0 / 0	3.0 / 3.0	15 / 15	31.2 / 36.1	39 / 45	60 / 60
^HKR3-20*	0 / 0	3.0 / 3.0	15 / 15	40.6 / 46.9	51 / 59	60 / 60
MBR1600AA-1 **	0 / 0	3.8 / 3.8	15 / 15	---	---	---
HKR-03*	10.8 / 12.5	17 / 19	20 / 20	---	---	---
HKR-05* / 05C*	17.1 / 19.8	24 / 28	40 / 40	---	---	---
HKR-06*	21.6 / 25.0	30 / 34	40 / 40	---	---	---
HKR-08* / -08C*	25.3 / 29.2	35 / 39	40 / 40	---	---	---
HKR-10* / -10C*	34.3 / 39.6	46 / 53	60 / 60	---	---	---
HKR-15C*	34.3 / 39.6	46 / 53	60 / 60	17.2 / 19.8	22 / 25	30 / 30
HKR-20C*	34.3 / 39.6	46 / 53	60 / 60	34.3 / 39.6	43 / 50	60 / 60
HKR-21C*	37.9 / 43.8	50 / 58	60 / 60	37.9 / 43.8	47 / 55	60 / 60
^HKR3-15*	0 / 0	3.8 / 3.8	15 / 15	31.26 / 36.1	39 / 45	60 / 60
^HKR3-20*	0 / 0	3.8 / 3.8	15 / 15	40.6 / 46.9	51 / 59	60 / 60
MBR2000AA-1 **	0 / 0	4.9 / 4.9	15 / 15	---	---	---
HKR-03*	10.8 / 12.5	17 / 20	20 / 20	---	---	---
HKR-05* / 05C*	17.1 / 19.8	25 / 29	40 / 40	---	---	---
HKR-06*	21.6 / 25.0	31 / 35	40 / 40	---	---	---
HKR-08* / -08C*	25.3 / 29.2	36 / 40	60 / 60	---	---	---
HKR-10* / -10C*	34.3 / 39.6	47 / 53	60 / 60	---	---	---
HKR-15C*	34.3 / 39.6	47 / 53	60 / 60	17.2 / 19.8	22 / 25	30 / 30
HKR-20C*	34.3 / 39.6	47 / 53	60 / 60	34.3 / 39.6	43 / 50	60 / 60
HKR-21C*	37.9 / 43.8	51 / 59	60 / 60	37.9 / 43.8	47 / 55	60 / 60
^HKR3-15*	0 / 0	4.9 / 4.9	15 / 15	31.2 / 36.1	39 / 45	60 / 60
^HKR3-20*	0 / 0	4.9 / 4.9	15 / 15	40.6 / 46.9	51 / 59	60 / 60

See Notes on next page.

AIR HANDLER ELECTRICAL DATA (CONT.)

Model & Heat Kit Usage	Circuit 1			Circuit 2		
	Heater Amps	MCA ¹	MOP ²	Heater Amps	MCA ¹	MOP ²
MBE1200AA-1A*	0 / 0	3.1 / 3.1	15 / 15	--	--	--
HKR-08*, HKR-08C*	25.3 / 29.2	34 / 39	40 / 40	--	--	--
HKR-10*, HKR-10C*	34.3 / 39.6	45 / 52	60 / 60	--	--	--
HKR-15C*	34.3 / 39.6	45 / 52	60 / 60	17.2/19.8	22/25	30 / 30
MBE1600AA-1A*	0 / 0	5.6 / 5.6	15 / 15	---	--	--
HKR-10*, HKR-10C*	34.3 / 39.6	47 / 54	60 / 60	---	--	--
HKR-15C*	34.3 / 39.6	47 / 54	60 / 60	17.2/19.8	22/25	30 / 30
MBE2000AA-1A*	0 / 0	4.4 / 4.4	15 / 15	--	--	--
HKR-10*, HKR-10C*	34.3 / 39.6	46 / 53	60 / 60	--	--	--
HKR-15C*	34.3 / 39.6	46 / 53	60 / 60	17.2/19.8	22/25	30 / 30
HKR-20C*	34.3 / 39.6	46 / 53	60 / 60	34.3 / 39.6	43 / 50	60 / 60
MBE1200AA-1B*	0 / 0	3.1 / 3.1	15 / 15	---	---	---
HKR-03*	10.8 / 12.5	17 / 19	20 / 20	---	---	---
HKR-05* / 05C*	17.1 / 19.8	24 / 28	30 / 30	---	---	---
HKR-06*	21.6 / 25.0	30 / 34	40 / 40	---	---	---
HKR-08* / -08C*	25.3 / 29.2	34 / 39	40 / 40	---	---	---
HKR-10* / -10C*	34.3 / 39.6	45 / 52	60 / 60	---	---	---
HKR-15C*	34.3 / 39.6	45 / 52	60 / 60	17.2 / 19.8	22 / 25	30 / 30
MBE1600AA-1B*	0 / 0	5.6 / 5.6	15 / 15	---	---	---
HKR-03*	10.8 / 12.5	19 / 21	30 / 30	---	---	---
HKR-05* / 05C*	17.1 / 19.8	27 / 30	40 / 40	---	---	---
HKR-06*	21.6 / 25.0	33 / 37	40 / 40	---	---	---
HKR-08* / -08C*	25.3 / 29.2	37 / 42	60 / 60	---	---	---
HKR-10* / -10C*	34.3 / 39.6	47 / 54	60 / 60	---	---	---
HKR-15C*	34.3 / 39.6	47 / 54	60 / 60	17.2 / 19.8	22 / 25	30 / 30
MBE2000AA-1B*	0 / 0	4.4 / 4.4	15 / 15	---	---	---
HKR-03*	10.8 / 12.5	18 / 20	20 / 20	---	---	---
HKR-05* / 05C*	17.1 / 19.8	26 / 29	30 / 30	---	---	---
HKR-06*	21.6 / 25.0	31 / 36	40 / 40	---	---	---
HKR-08* / -08C*	25.3 / 29.2	36 / 41	60 / 60	---	---	---
HKR-10* / -10C*	34.3 / 39.6	46 / 53	60 / 60	---	---	---
HKR-15C*	34.3 / 39.6	46 / 53	60 / 60	17.2 / 19.8	22 / 25	30 / 30
HKR-20C*	34.3 / 39.6	46 / 53	60 / 60	34.3 / 39.6	43 / 50	60 / 60

¹ Minimum Circuit Ampacity @ 208 / 240 V

² Maximum Overcurrent Protection Device @ 208 / 240 V

* Revision level that may or may not be designated

C Circuit breaker option

^ Heat Kit requires three-phase power supply

Note: All HKR ampacities noted above include air handler motor amps, excluding three-phase models.

**ELECTRICAL DATA FOR GPC “H” SERIES PACKAGED UNITS
(BLOWER ONLY, HEAT MODE)**

Model and Heat Kit Usage	Circuit #1		Circuit #2		Actual kW / BTU@ 240V
	MCA ¹	MOP ²	MCA ¹	MOP ²	
GPC1324H21A, AB	1.5 / 1.5	--	--	--	--
HKR-05*, HKR-05C*	24 / 27	30 / 30	--	--	4.75 / 16,200
HKR-08*, HKR-08C*	33 / 38	40 / 40	--	--	7 / 23,800
HKR-10*, HKR-10C*	45 / 51	60 / 60	--	--	9.5 / 32,400
GPC1330H21A, AB	2.4 / 2.4	--	--	--	--
HKR-05*, HKR-05C*	24 / 27	30 / 30	--	--	4.75 / 16,200
HKR-08*, HKR-08C*	34 / 39	40 / 40	--	--	7 / 23,800
HKR-10*, HKR-10C*	45 / 52	60 / 60	--	--	9.5 / 32,400
HKR-15*, HKR-15C*	45 / 52	60 / 60	22 / 25	30 / 30	14.25 / 48,600
GPC1336H21A, AB	2.4 / 2.4	--	--	--	--
HKR-05*, HKR-05C*	24 / 27	30 / 30	--	--	4.75 / 16,200
HKR-08*, HKR-08C*	34 / 39	40 / 40	--	--	7 / 23,800
HKR-10*, HKR-10C*	45 / 52	60 / 60	--	--	9.5 / 32,400
HKR-15*, HKR-15C*	45 / 52	60 / 60	22 / 25	30 / 30	14.25 / 48,600
GPC1342H21A, AB	3.9 / 3.9	--	--	--	--
HKR-05*, HKR-05C*	25 / 27	30 / 30	--	--	4.75 / 16,200
HKR-08*, HKR-08C*	34 / 39	40 / 40	--	--	7 / 23,800
HKR-10*, HKR-10C*	46 / 52	60 / 60	--	--	9.5 / 32,400
HKR-15*, HKR-15C*	46 / 52	60 / 60	22 / 25	30 / 30	14.25 / 48,600
HKR-20*,HKR-20C*	46 / 52	60 / 60	43 / 49	60 / 60	19.5 / 66,500
GPC1348H21A, AB	3.9 / 3.9	--	--	--	--
HKR-05*, HKR-05C*	25 / 28	30 / 30	--	--	4.75 / 16,200
HKR-08*, HKR-08C*	34 / 40	40 / 40	--	--	7 / 23,800
HKR-10*, HKR-10C*	46 / 53	60 / 60	--	--	9.5 / 32,400
HKR-15*, HKR-15C*	46 / 52	60 / 60	22 / 25	30 / 30	14.25 / 48,600
HKR-20*,HKR-20C*	46 / 52	60 / 60	43 / 49	60 / 60	19.5 / 66,500
GPC1360H21A, AA	6.0 / 6.0	--	--	--	--
HKR-05*, HKR-05C*	26 / 30	30 / 30	--	--	4.75 / 16,200
HKR-08*, HKR-08C*	36 / 40	40 / 40	--	--	7 / 23,800
HKR-10*, HKR-10C*	48 / 54	60 / 60	--	--	9.5 / 32,400
HKR-15*, HKR-15C*	48 / 54	60 / 60	22 / 25	30 / 30	14.25 / 48,600
HKR-20*,HKR-20C*	48 / 54	60 / 60	43 / 49	60 / 60	19.5 / 66,500

¹ Minimum Circuit Ampacity @ 208 / 240 V

² Maximum Overcurrent Protection Device @ 208 / 240 V

* Revision level that may or may not be designated

C Circuit breaker option

^ Heat Kit requires three-phase power supply

NOTE: All HKR ampacities noted above include air handler motor amps, excluding three-phase models.

ELECTRICAL DATA FOR GPH “H” SERIES PACKAGED UNITS (BLOWER ONLY, HEAT MODE)

Model and Heat Kit Usage	Circuit #1		Circuit #2		Actual kW / BTU@ 240V
	MCA ¹	MOP ²	MCA ¹	MOP ²	
GPH1324H21A, AB	1.5 / 1.5	--	--	--	--
HKR-05*, HKR-05C*	24 / 27	30 / 30	--	--	4.75 / 16,200
HKR-08*, HKR-08C*	33 / 38	40 / 40	--	--	7 / 23,800
HKR-10*, HKR-10C*	45 / 51	60 / 60	--	--	9.5 / 32,400
GPH1330H21A, AB	2.4 / 2.4	--	--	--	--
HKR-05*, HKR-05C*	24 / 27	30 / 30	--	--	4.75 / 16,200
HKR-08*, HKR-08C*	34 / 39	40 / 40	--	--	7 / 23,800
HKR-10*, HKR-10C*	45 / 52	60 / 60	--	--	9.5 / 32,400
HKR-15*, HKR-15C*	45 / 52	60 / 60	22 / 25	30 / 30	14.25 / 48,600
GPH1336H21A, AB	2.4 / 2.4	--	--	--	--
HKR-05*, HKR-05C*	24 / 27	30 / 30	--	--	4.75 / 16,200
HKR-08*, HKR-08C*	34 / 39	40 / 40	--	--	7 / 23,800
HKR-10*, HKR-10C*	45 / 52	60 / 60	--	--	9.5 / 32,400
HKR-15*, HKR-15C*	45 / 52	60 / 60	22 / 25	30 / 30	14.25 / 48,600
GPH1342H21A, AB	3.9 / 3.9	--	--	--	--
HKR-05*, HKR-05C*	25 / 27	30 / 30	--	--	4.75 / 16,200
HKR-08*, HKR-08C*	34 / 39	40 / 40	--	--	7 / 23,800
HKR-10*, HKR-10C*	46 / 52	60 / 60	--	--	9.5 / 32,400
HKR-15*, HKR-15C*	46 / 52	60 / 60	22 / 25	30 / 30	14.25 / 48,600
HKR-20*,HKR-20C*	46 / 52	60 / 60	43 / 49	60 / 60	19.5 / 66,500
GPH1348H21A, AB	3.9 / 3.9	--	--	--	--
HKR-05*, HKR-05C*	25 / 28	30 / 30	--	--	4.75 / 16,200
HKR-08*, HKR-08C*	34 / 40	40 / 40	--	--	7 / 23,800
HKR-10*, HKR-10C*	46 / 53	60 / 60	--	--	9.5 / 32,400
HKR-15*, HKR-15C*	46 / 52	60 / 60	22 / 25	30 / 30	14.25 / 48,600
HKR-20*,HKR-20C*	46 / 52	60 / 60	43 / 49	60 / 60	19.5 / 66,500
GPH1360H21A, AA	6.0 / 6.0	--	--	--	--
HKR-05*, HKR-05C*	26 / 30	30 / 30	--	--	4.75 / 16,200
HKR-08*, HKR-08C*	36 / 40	40 / 40	--	--	7 / 23,800
HKR-10*, HKR-10C*	48 / 54	60 / 60	--	--	9.5 / 32,400
HKR-15*, HKR-15C*	48 / 54	60 / 60	22 / 25	30 / 30	14.25 / 48,600
HKR-20*,HKR-20C*	48 / 54	60 / 60	43 / 49	60 / 60	19.5 / 66,500

¹ Minimum Circuit Ampacity @ 208 / 240 V

² Maximum Overcurrent Protection Device @ 208 / 240 V

* Revision level that may or may not be designated

C Circuit breaker option

^ Heat Kit requires three-phase power supply

Note: All HKR ampacities noted above include air handler motor amps, excluding three-phase models.

**ELECTRICAL DATA FOR GPC “M” SERIES PACKAGED UNITS
(BLOWER ONLY, HEAT MODE)**

Model & Heat Kit Usage	Circuit #1		Circuit #2		Actual kW / BTU@ 240V
	MCA ¹	MOP ²	MCA ¹	MOP ²	
GPC1336M21AA	1.9 / 1.9	--	--	--	--
HKR-05*, HKR-05C*	24 / 27	30 / 30	--	--	4.75 / 16,200
HKR-08*, HKR-08C*	34 / 39	40 / 40	--	--	7.0 / 23,800
HKR-10*, HKR-10C*	45 / 52	60 / 60	--	--	9.5 / 32,400
HKR-15*, HKR-15C*	45 / 52	60 / 60	22 / 25	30 / 30	14.25 / 48,600
GPC1348M21AA	5.8 / 5.8	--	--	--	--
HKR-05*, HKR-05C*	25 / 28	30 / 30	--	--	4.75 / 16,200
HKR-08*, HKR-08C*	38 / 40	40 / 40	--	--	7.0 / 23,800
HKR-10*, HKR-10C*	49 / 56	60 / 60	--	--	9.5 / 32,400
HKR-15*, HKR-15C*	49 / 56	60 / 60	22 / 25	30 / 30	14.25 / 48,600
HKR-20*, HKR-20C*	49 / 56	60 / 60	43 / 49	60 / 60	19.5 / 66,500
GPC1360M21AA	7.6 / 7.6	--	--	--	--
HKR-05*, HKR-05C*	29 / 30	30 / 30	--	--	4.75 / 16,200
HKR-08*, HKR-08C*	39 / 40	40 / 40	--	--	7.0 / 23,800
HKR-10*, HKR-10C*	51 / 58	60 / 60	--	--	9.5 / 32,400
HKR-15*, HKR-15C*	51 / 58	60 / 60	22 / 25	30 / 30	14.25 / 48,600
HKR-20*, HKR-20C*	51 / 58	60 / 60	43 / 49	60 / 60	19.5 / 66,500

¹ Minimum Circuit Ampacity @ 208 / 240 V

² Maximum Overcurrent Protection Device @ 208 / 240 V

* Revision level that may or may not be designated

C Circuit breaker option

^ Heat Kit requires three-phase power supply

NOTE: All HKR ampacities noted above include air handler motor amps, excluding three-phase models.

ELECTRICAL DATA FOR GPH “M” SERIES PACKAGED UNITS (BLOWER ONLY, HEAT MODE)

Model & Heat Kit Usage	Circuit #1		Circuit #2		Actual kW / BTU@ 240V
	MCA ¹	MOP ²	MCA ¹	MOP ²	
GPH1324M21AA	1.5 / 1.5	--	--	--	--
HKR-05*, HKR-05C*	24 / 27	30 / 30	--	--	4.75 / 16,200
HKR-08*, HKR-08C*	34 / 39	40 / 40	--	--	7.0 / 23,800
HKR-10*, HKR-10C*	45 / 52	60 / 60	--	--	9.5 / 32,400
GPH1330M21AA	1.5 / 1.5	--	--	--	--
HKR-05*, HKR-05C*	24 / 27	30 / 30	--	--	4.75 / 16,200
HKR-08*, HKR-08C*	34 / 39	40 / 40	--	--	7.0 / 23,800
HKR-10*, HKR-10C*	45 / 52	60 / 60	--	--	9.5 / 32,400
HKR-15*, HKR-15C*	45 / 52	60 / 60	22 / 25	30 / 30	14.25 / 48,600
GPH1336M21AA	1.9 / 1.9	--	--	--	--
HKR-05*, HKR-05C*	24 / 27	30 / 30	--	--	4.75 / 16,200
HKR-08*, HKR-08C*	34 / 39	40 / 40	--	--	7.0 / 23,800
HKR-10*, HKR-10C*	45 / 52	60 / 60	--	--	9.5 / 32,400
HKR-15*, HKR-15C*	45 / 52	60 / 60	22 / 25	30 / 30	14.25 / 48,600
GPH1348M21AA	5.8 / 5.8	--	--	--	--
HKR-05*, HKR-05C*	25 / 28	30 / 30	--	--	4.75 / 16,200
HKR-08*, HKR-08C*	38 / 40	40 / 40	--	--	7.0 / 23,800
HKR-10*, HKR-10C*	49 / 56	60 / 60	--	--	9.5 / 32,400
HKR-15*, HKR-15C*	49 / 56	60 / 60	22 / 25	30 / 30	14.25 / 48,600
HKR-20*, HKR-20C*	49 / 56	60 / 60	43 / 49	60 / 60	19.5 / 66,500
GPH1360M21AA	7.6 / 7.6	--	--	--	--
HKR-05*, HKR-05C*	29 / 30	30 / 30	--	--	4.75 / 16,200
HKR-08*, HKR-08C*	39 / 40	40 / 40	--	--	7.0 / 23,800
HKR-10*, HKR-10C*	51 / 58	60 / 60	--	--	9.5 / 32,400
HKR-15*, HKR-15C*	51 / 58	60 / 60	22 / 25	30 / 30	14.25 / 48,600
HKR-20*, HKR-20C*	51 / 58	60 / 60	43 / 49	60 / 60	19.5 / 66,500
GPH1524M41AA	4.1 / 4.1	--	--	--	--
HKR-05*, HKR-05C*	24 / 27	30 / 30	--	--	4.75 / 16,200
HKR-08*, HKR-08C*	34 / 39	40 / 40	--	--	7.0 / 23,800
HKR-10*, HKR-10C*	45 / 52	60 / 60	--	--	9.5 / 32,400
GPH1536M41AA	4.1 / 4.1	--	--	--	--
HKR-05*, HKR-05C*	24 / 27	30 / 30	--	--	4.75 / 16,200
HKR-08*, HKR-08C*	34 / 39	40 / 40	--	--	7.0 / 23,800
HKR-10*, HKR-10C*	45 / 52	60 / 60	--	--	9.5 / 32,400
HKR-15*, HKR-15C*	45 / 52	60 / 60	22 / 25	30 / 30	14.25 / 48,600
GPH1548M41AA	5.8 / 5.8	--	--	--	--
HKR-05*, HKR-05C*	25 / 28	30 / 30	--	--	4.75 / 16,200
HKR-08*, HKR-08C*	38 / 40	40 / 40	--	--	7.0 / 23,800
HKR-10*, HKR-10C*	49 / 56	60 / 60	--	--	9.5 / 32,400
HKR-15*, HKR-15C*	49 / 56	60 / 60	22 / 25	30 / 30	14.25 / 48,600
HKR-20*, HKR-20C*	49 / 56	60 / 60	43 / 49	60 / 60	19.5 / 66,500
GPH1560M41AA	7.6 / 7.6	--	--	--	--
HKR-05*, HKR-05C*	29 / 30	30 / 30	--	--	4.75 / 16,200
HKR-08*, HKR-08C*	39 / 40	40 / 40	--	--	7.0 / 23,800
HKR-10*, HKR-10C*	51 / 58	60 / 60	--	--	9.5 / 32,400
HKR-15*, HKR-15C*	51 / 58	60 / 60	22 / 25	30 / 30	14.25 / 48,600
HKR-20*, HKR-20C*	51 / 58	60 / 60	43 / 49	60 / 60	19.5 / 66,500

See Notes on previous page.

ELECTRICAL DATA FOR GPC-H “M” SERIES THREE-PHASE PACKAGED UNIT (BLOWER ONLY, HEAT MODE)

Model & Heat Kit Usage	Circuit #1		Circuit #2		Actual kW / BTU@ 240V
	MCA ¹	MOP ²	MCA ¹	MOP ²	
GPC1336M23AA	1.9 / 1.9	--	--	--	--
^HKR3-15*	39 / 45	60 / 60	--	--	15.0 / 55,100
^HKR3-20*	51 / 55	60 / 60	--	--	19.5 / 66,500
GPC1348M23AA	5.8 / 5.8	--	--	--	--
^HKR3-15*	39 / 45	60 / 60	--	--	15.0 / 55,100
^HKR3-20*	51 / 55	60 / 60	--	--	19.5 / 66,500
GPC1360M23AA	7.6 / 7.6	--	--	--	--
^HKR3-15*	39 / 45	60 / 60	--	--	15.0 / 55,100
^HKR3-20*	51 / 55	60 / 60	--	--	19.5 / 66,500

GPH1336M23AA	1.9 / 1.9	--	--	--	--
^HKR3-15*	39 / 45	60 / 60	--	--	15.0 / 55,100
^HKR3-20*	51 / 55	60 / 60	--	--	19.5 / 66,500
GPH1348M23AA	5.8 / 5.8	--	--	--	--
^HKR3-15*	39 / 45	60 / 60	--	--	15.0 / 55,100
^HKR3-20*	51 / 55	60 / 60	--	--	19.5 / 66,500
GPH1360M23AA	7.6 / 7.6	--	--	--	--
^HKR3-15*	39 / 45	60 / 60	--	--	15.0 / 55,100
^HKR3-20*	51 / 55	60 / 60	--	--	19.5 / 66,500

Model & Heat Kit Usage	Circuit #1		Circuit #2		Actual kW / BTU@ 460V
	MCA ³	MOP ⁴	MCA ³	MOP ⁴	
GPC1336M24AA	1.2 / 1.2	--	--	--	--
^HKR4-15*	23	30	--	--	15.0 / 55,100
^HKR4-20*	30	30	--	--	19.5 / 66,500
GPC1348M24AA	2.9 / 2.9**	--	--	--	--
^HKR4-15*	23	30	--	--	15.0 / 55,100
^HKR4-20*	30	30	--	--	19.5 / 66,500
GPC1360M24AA	3.8 / 3.8**	--	--	--	--
^HKR4-15*	23	30	--	--	15.0 / 55,100
^HKR4-20*	30	30	--	--	19.5 / 66,500

GPH1336M24AA	1.2 / 1.2	--	--	--	--
^HKR4-15*	23	30	--	--	15.0 / 55,100
^HKR4-20*	30	30	--	--	19.5 / 66,500
GPH1348M24AA	2.9 / 2.9	--	--	--	--
^HKR4-15*	23	30	--	--	15.0 / 55,100
^HKR4-20*	30	30	--	--	19.5 / 66,500
GPH1360M24AA	3.8 / 3.8	--	--	--	--
^HKR4-15*	23	30	--	--	15.0 / 55,100
^HKR4-20*	30	30	--	--	19.5 / 66,500

¹ Minimum Circuit Ampacity @ 208 / 240 V

² Maximum Overcurrent Protection device @ 208 / 240 V

³ Minimum Circuit Ampacity @ 460 V

⁴ Maximum Overcurrent Protection device @ 460 V

* Revision level that may or may not be designated

C Circuit Breaker option

^ Heat Kit requires three-phase power supply

Note: All HKR ampacities noted above include unit motor amps. Excluding three-phase models

Goodman Manufacturing Company, L.P., reserves the right to discontinue, or change at any time, specifications or designs without notice or without incurring obligations.

Copyright © 2008 • Goodman Manufacturing Company, L.P. • Houston, Texas • Printed in the USA.

