



Air Conditioning & Heating

AR SERIES

MULTI-POSITION ELECTRIC AIR HANDLER

50 Hz, 1½- TO 5-TON

PRODUCT SPECIFICATIONS

Standard Features

- Equipped with a check flowrater for heat pump and cooling operation
- Direct-drive, multi-speed motor to permit air volume variation for heating and cooling application needs
- Built-in coil with horizontal and vertical thermo-plastic drain pans with secondary drains
- Rifled aluminum tubing and louvered aluminum fin coils in A24-00-2R and A48-00-2R models
- Rifled copper tubing and wavy aluminum fin coils in A36-00-2R and A60-00-2R models
- Built-in filter provision
- Power supply entry at top
- Low-voltage entry on left side and top
- Transformer and blower time delay on all units

Cabinet Features

- Fully insulated steel cabinet
- Galvanized stucco finish with painted front panels

Accessories

- Pre-tested, pre-wired heat kits in 3, 5, 6, 8, 10, 15, 20 kW, single-phase models; featuring electric heat limit control, rust-resistant nickel chromium heating elements and select models with circuit breakers
- Permanent washable plastic air filters (FIL18-32, FIL36-42, FIL48-61)



SPECIFICATIONS

	A24-00-2R	A36-00-2R	A48-00-2R	A60-00-2R
Electrical Data				
Min. Circuit Ampacity ¹	1.1/1.1	1.8/1.8	1.8/1.8	4.3/4.3
Max. Overcurrent Protection ²	15/15	15/15	15/15	15/15
Min./Max. VAC	198/264	198/264	198/264	198/264
Blower Motor				
FLA	0.85	1.4	1.4	3.4
HP	1/8	1/4	1/4	3/4
Physical Data				
Blower				
Diameter	9½" [24.1]	9½" [24.1]	9½" [24.1]	10½" [26.9]
Width	6" [15.2]	8" [20.5]	8" [20.5]	10½" [26.9]
Coil Drain Connect FPT	¾" [1.9]	¾" [1.9]	¾" [1.9]	¾" [1.9]
Refrigerant Connection				
Liquid	⅝" [.95]	⅝" [.95]	⅝" [.95]	⅝" [.95]
Suction	¾" [1.9]	¾" [1.9]	⅞" [2.2]	⅞" [2.2]
Ship Weight	106 lbs. [48.0]	141 lbs. [63.9]	173 lbs. [78.4]	192 lbs. [87.0]

¹ @220/240V

² @220/240V

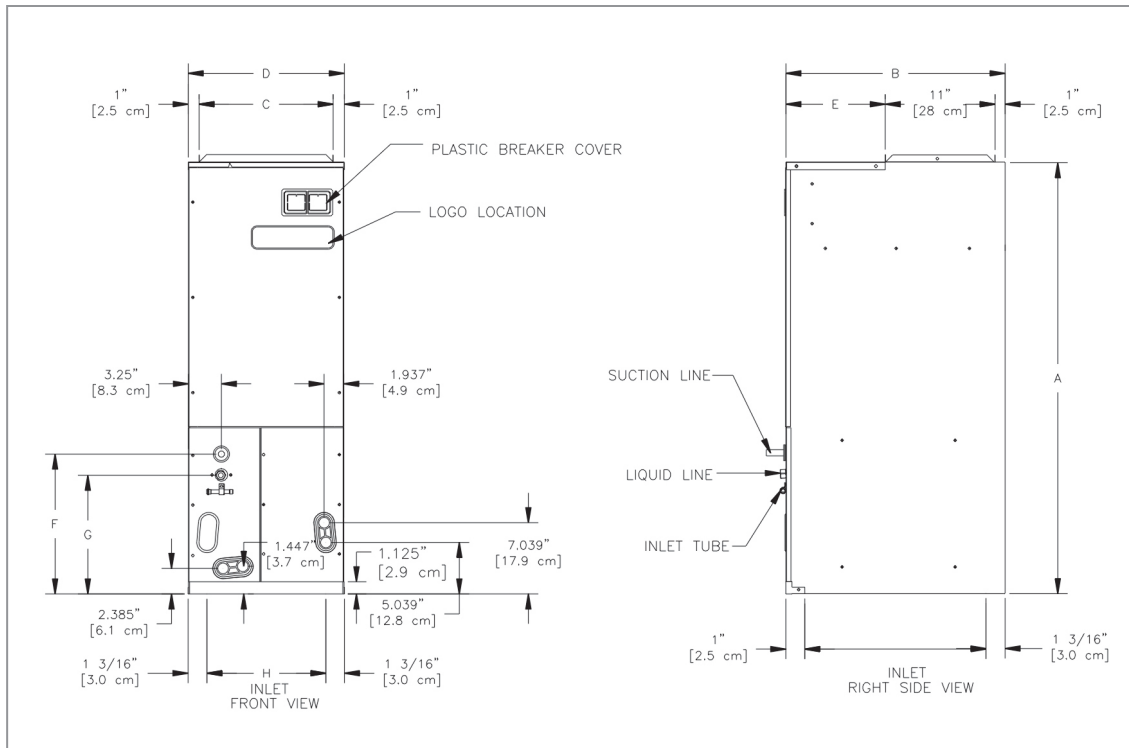
[] Designates metric equivalents

BLOWER PERFORMANCE

Model	Speed	Airflow (CFM [L/s]) Delivered against External Static Pressure (in. WC [Pa])				
		.1 [2.5]	.2 [5.0]	.3 [7.5]	.4 [10.0]	.5 [12.5]
A24-00-2R	High	960 [453]	930 [439]	890 [420]	840 [397]	780 [368]
	Low	810 [382]	780 [368]	760 [358]	720 [340]	670 [316]
A36-00-2R	High	1,450 [685]	1,415 [668]	1,360 [642]	1,280 [604]	1,200 [567]
	Low	1,260 [595]	1,240 [585]	1,200 [566]	1,145 [541]	1,060 [500]
A48-00-2R	High	1,670 [789]	1,610 [760]	1,500 [708]	1,440 [680]	1,370 [647]
	Low	1,310 [619]	1,300 [614]	1,290 [609]	1,280 [604]	1,260 [595]
A60-00-2R	High	2,170 [1,025]	2,080 [982]	2,000 [944]	1,920 [907]	1,850 [874]
	Low	1,900 [897]	1,810 [855]	1,700 [803]	1,590 [751]	1,500 [708]

[] Designates metric equivalents; Airflow = Liters per second; External Static Pressure = Pascals
Assumes dry coil with Filter in Place SCFM Correction for Wet Coil - 4%.

DIMENSIONS



Base Model	A	B	C	D	E	F	G	H	J	K
A24-00-2R	41.125 [107.0 cm]	22 [55.9 cm]	13.5 [34.3 cm]	15.5 [39.4 cm]	10 [25.4 cm]	13.375 [34.0 cm]	10.811 [27.5 cm]	13.125 [33.3 cm]	19.812 [50.3 cm]	3.563 [9.05CM]
A36-00-2R	46.75 [118.7 cm]	22 [55.9 cm]	17.5 [44.5 cm]	19.5 [49.5 cm]	10 [25.4 cm]	13.375 [34.0 cm]	10.811 [27.5 cm]	17.125 [43.5 cm]	19.812 [50.3 cm]	3.563 [9.05CM]
A48-00-2R A60-00-2R	53.25 [135.3 cm]	24 [61.0 cm]	20 [50.8 cm]	22 [55.9 cm]	12 [30.5 cm]	14.5 [36.8 cm]	11.935 [30.3 cm]	19.625 [49.8 cm]	21.812 [55.4 cm]	3.343 [8.49CM]

[] Designates Metric Equivalents

PERFORMANCE RATINGS

Model	Nominal Cooling Capacity (tons)	Seasonal Efficiency AFUE%
A24-00-2R	2	100.0
A36-00-2R	3	100.0
A48-00-2R	4	100.0
A60-00-2R	5	100.0

HEATER KIT APPLICATION OPTIONS

	A24-00-2R	A36-00-2R	A48-00-2R	A60-00-2R
HKR-03*	X	X	X	X
HKR-05*/05C*	X	X	X	X
HKR-06*	X	X	X	X
HKR-08*/-08C*	X	X	X	X
HKR-10*/-10C*	X	X	X	X
HKR-15C*		X	X	X
HKR-20C*		X	X	X

* Revision level that may or may not be designated

C Circuit breaker option

^ Heat Kit requires three-phase power supply

